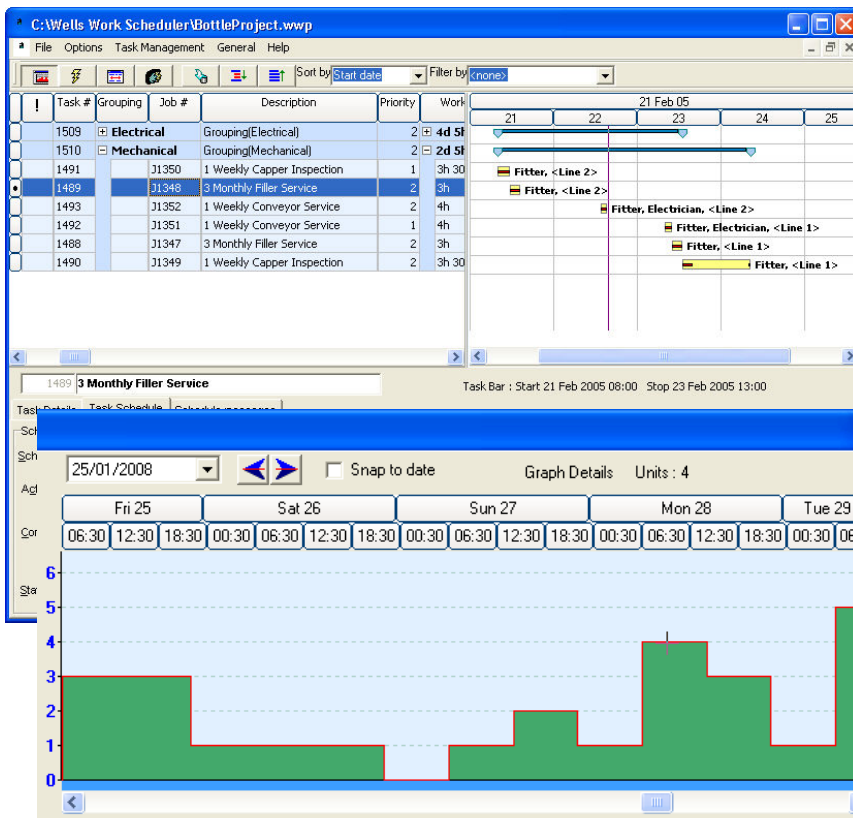


# Resource Governance Solutions

## Maintenance Activity Scheduler (MAS)

### MAS



- ✓ Maintenance Activity Scheduler, provides the best solution for scheduling maintenance activities by taking account both Labour and Asset availability.
- ✓ Gantt and Resource usage views clearly show the automatically generated task schedule and you can apply manual overrides, if required.
- ✓ Efficiently manage Calendars and Resource availability using graphical or tabular interfaces. Easily adjust for overtime or changes in availability.
- ✓ Integration with popular maintenance systems provides a seamless environment for scheduling maintenance activities.
- ✓ Call today to find out how MAS can help make your business more effective and efficient.

### Advanced Functionality

The Maintenance Activity Scheduler automates the scheduling of maintenance taking into account priorities, resource availabilities and scheduling constraints.

### Resource Types

Scheduling is based on Labour, Equipment and Team resources. Labour resources carry-out the work while Equipment and Team resources must be available to enable scheduling to occur.

Resources can be managed using graphical or grid interfaces.

### Constraints

Constraints dictate to the scheduler how to schedule a particular Job. Constraints include: Must Start On; Must Finish On; ASAP; and at End of Project.

### Integration

Integration provides access to Jobs/Work Order details from maintenance systems and the return of scheduling data to the maintenance system.

Interfaces are available to load labour availability details from HR systems to improve scheduling efficiencies.

### Printing

Gantt chart printing with options to select Task details required and formatting of Gantt chart.

### Excel Running Sheets

Export schedules to Excel to provide an easy-to-follow schedule for supervisors and trades people.

### History

Copies of schedules can be saved and compared against actual performance achieved at the completion of the project.



# Resource Governance Solutions

## Maintenance Activity Scheduler (MAS)

### Overview

MAS is a project planning tool designed to schedule Tasks around the availability of resources to complete work. Each project has a Project Start and Project End date and each Task can have constraints applied to determine when it should be started or finished. Resources can be of type labour, equipment, or work teams. Any number of resources can be assigned to a Task. All resources are deemed to be working on a Task simultaneously.

Scheduling projects are either imported from external systems, i.e. maintenance systems, or created within the Scheduler itself. Projects comprise Project Configurations, Tasks and Resources.

### Tasks

Tasks define the work to be completed, the total effort, constraints, priorities, and resources required to complete the work. The task also contains information extracted from the external system when the task was imported into MAS.

Tasks may be assigned predecessors with a relationship that determines whether the task must start after the predecessor, start at the same time as the predecessor, finish before the predecessor starts or finish at the same time as the predecessor.

### Resources

Three types of resources are used for scheduling tasks. They are Labour, Assets (Equipment) and Teams.

Labour Resources are those that are assigned to actively undertake the work. The more Labour Resources assigned the quicker the task is performed.

Asset Resources represent the collection of physical equipment and tools that are required to be available in order to carry out the Task. Where an Asset Resource is assigned to a task it must be available for the task to be scheduled. The assignment of more than one Asset Resource does not result in the task being performed any quicker.

Team Resources represents the work team/shift that is required to be available for the Task to be scheduled. Where a Team resource is assigned, the Task will be scheduled to a period where that Team resource is available. The assignment of one or more Team Resources does not result in the task being performed any quicker.

### Calendars and Resource Availability

Each resource has an associated calendar that determines the standard days and working hours of the resource along with rules for treating public holidays and overtime. The number of resources available during each working period, or part thereof, determines the resources' availability for scheduling purposes.

### Scheduling

Scheduling is concerned with the optimal allocation of Resources to Tasks in a Project. MAS takes into account Constraints, Priorities and Predecessors to allocate Resource Availability to tasks. Once the automatic scheduling is complete tasks may be moved or locked as necessary.

### Integration

Tasks may be imported from external systems, i.e. Maintenance Systems, or from CSV formatted text files. Configurable mapping of source data to scheduling data ensures relevant data is available for scheduling. Schedule results are able to be exported to back to the source system. Extensive filters are available for selecting specific source Jobs/Work Orders that are to be part of the scheduling project.

### About Us

Resource Governance Solutions develops IT based solutions that simplify the challenging task of managing resources effectively and efficiently. Why not contact us today.

Resource Governance Solutions  
ABN 45 107 058 088  
Telephone: 1300 856 290  
Facsimile: 1800 856 290  
[www.resourcegovernor.com](http://www.resourcegovernor.com)